

Exchange of Experience Workshop

Managing Partnerships

Allen Weeks

ELI-DC

Wednesday, 12 September 18

The Science Case for a European Initiative

A globally leading **European Laser Community**

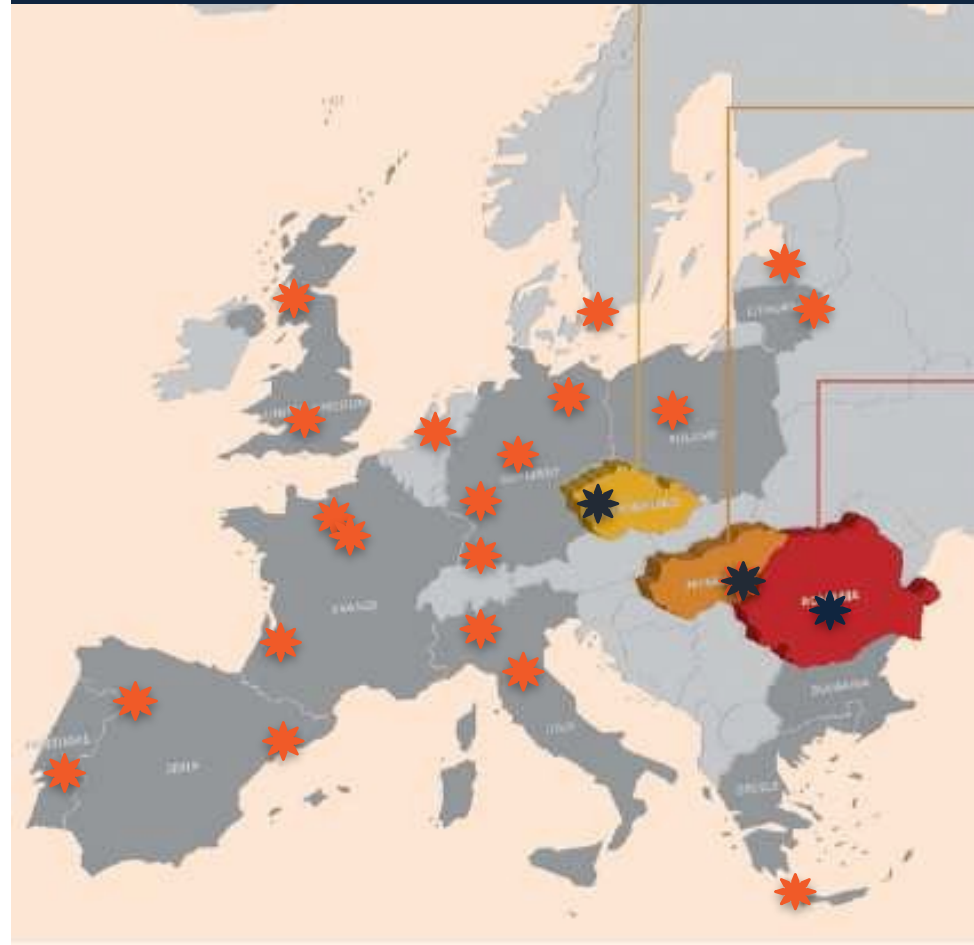
ELI builds on the success of **Laserlab-Europe**

A well-structured research landscape

A new, flexible instrument for science to pioneer and innovate on a global scale

The science programme begins in 2019.

Already today 1,500+ researchers from 25 EU Countries collaborate and co-produce new science and technology



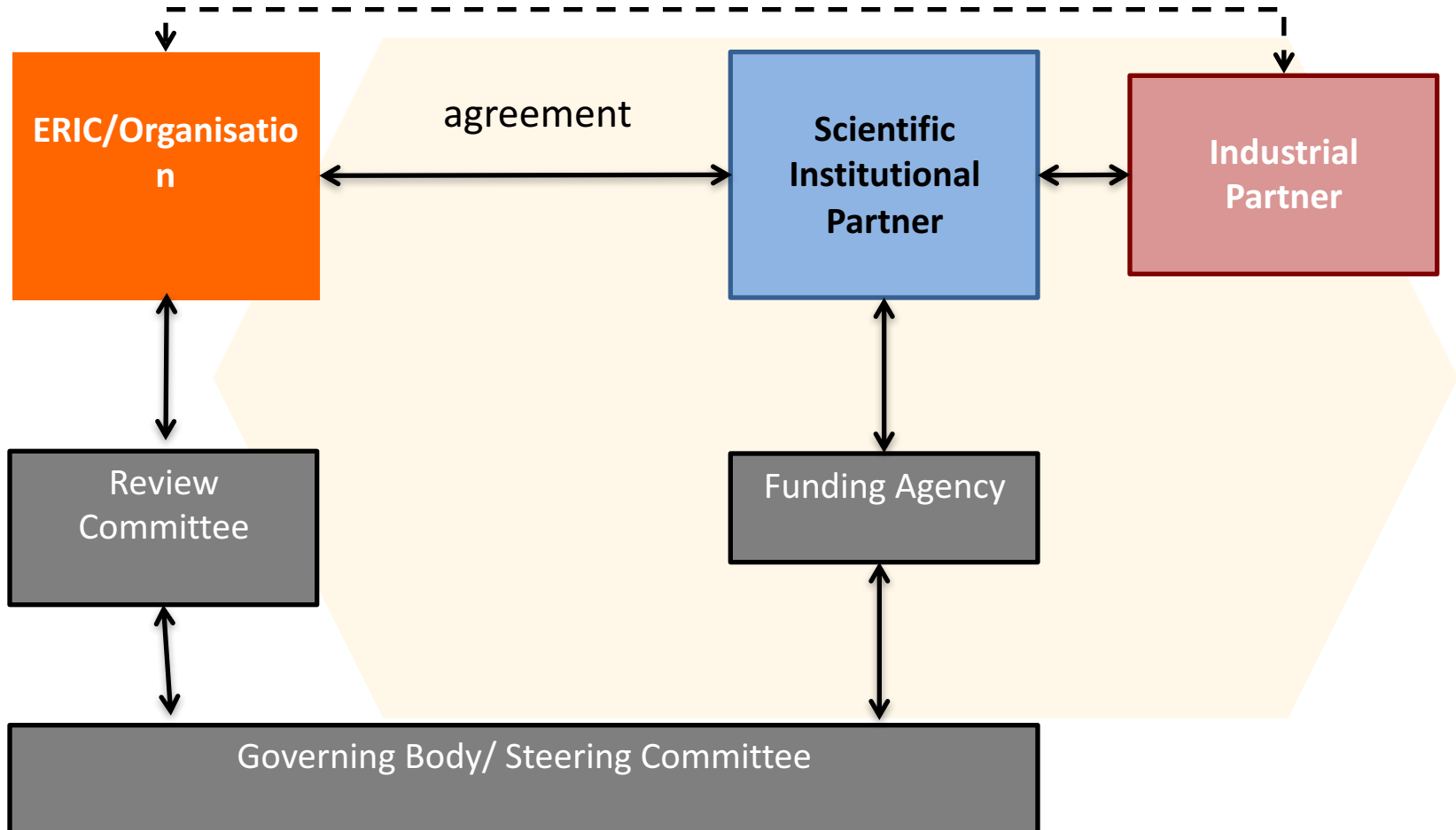
- The Hosts must **bring three facilities together as a single ELI ERIC**
- The ELI Host Countries will **share and rotate the seat of the ERIC on a three-year basis ... *RO > CZ > HU***
- **Transitioning** from Implementation (Construction) to **Operations**



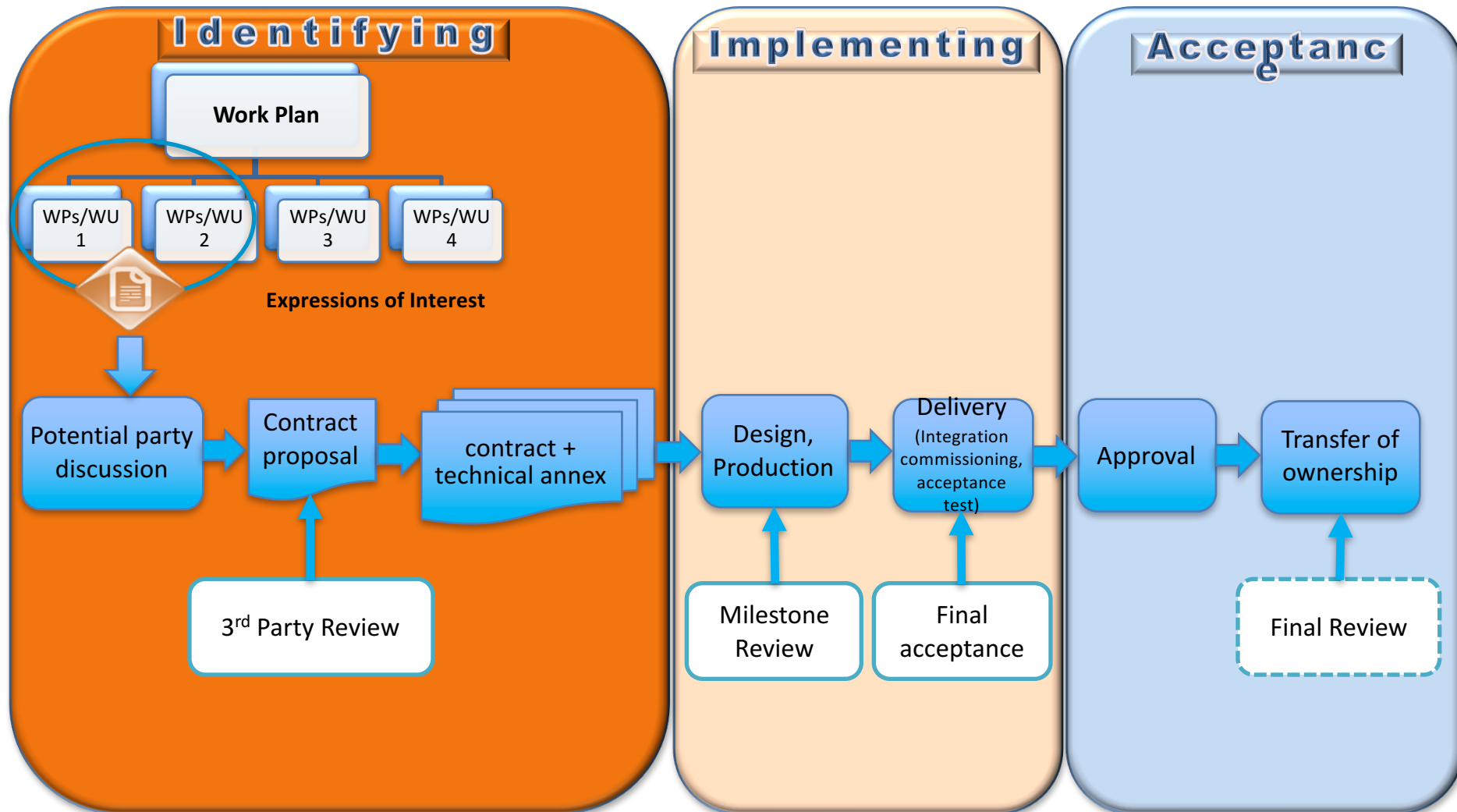
Collaboration Management Requires *Management*

- Resources (financial, human and technical) need to be allocated to manage – ***this is an investment***;
- ***Don't try to be 'right' – be effective.*** Keep focus on the goal to be achieved, project objectives, etc.;
- Recognise that ***interfaces between people*** is where work gets done – or not;
- Understand the landscape and be realistic – ***reality over 'hope'***.
- **Be structured and have a process to measure progress** – you can't manage what you don't measure.

Collaboration Landscape



A Process For Partnership



Some Thoughts on Collaboration *Management*

Collaborations are a balanced relationship and should be viewed as a 'partnership' not a 'supplier' relationship

Aim to be solution oriented and not get overwhelmed by 'legal' /administrative issues.

- Recognise collaborations as something to be managed – it is not a risk per se, it is an opportunity!
- The risk is not putting resources to manage the collaboration
- Strengthen the collaboration by providing interactions outside of the normal project scope – talk about how the collaboration is going
- Allowed certain issues to be handled systematically, with a global perspective - not only in project 'crisis' mode
- Look at best practices from both sides of the collaboration