

# METROFOOD-RI - Infrastructure for Promoting Metrology in Food and Nutrition

**Giovanna Zappa, Claudia Zoani**

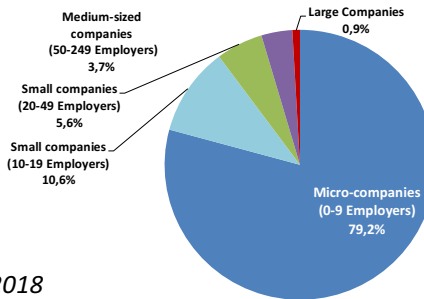
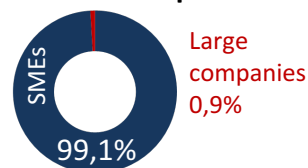


Italian National Agency for new Technologies, Energy and Sustainable Economic Development  
Department for Sustainability – Biotechnology and Agroindustry Division (SSPT-BIOAG)  
Casaccia Research Centre - Via Anguillarese 301, 00123 Roma (Italy)

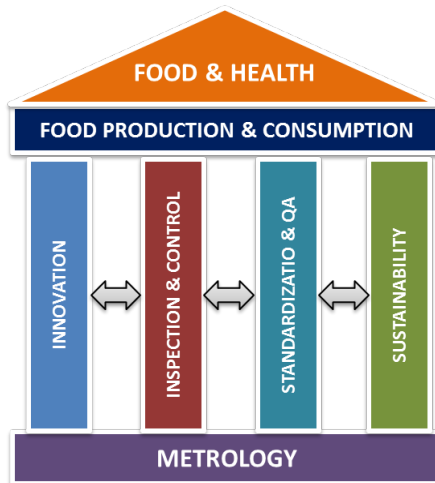
## The EU food and drink industry is:

- The largest manufacturing sector in the EU (€ 1098 billion turnover and €102 billion )
- The leading employer in the EU (4,24 million people employed)

289.000 Companies

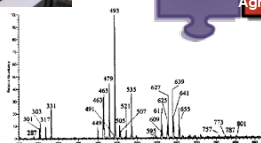
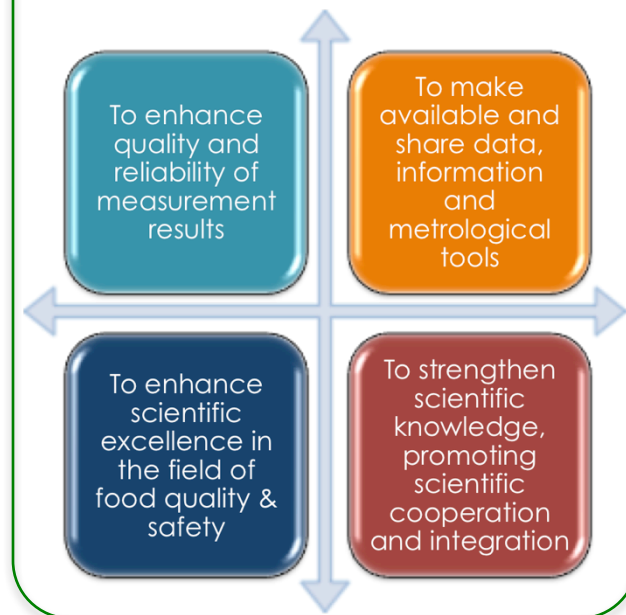


Source: FoodDrinkEurope, 2018



## 1. Why

### MISSION



### Food chain approach



# 2. What



## Physical-RI

## e-RI

### Metro

### Food

### Software development

### Data collection

### Data analysis

### Management of Interlaboratory tests

### Diffusion and Training

#### Plants and Labs for RM development

#### Analytical Labs.

#### Experimental fields/farms

#### Facilities for food processing and storage

development of new databases

Integration of existing databases

graphical interfaces development

database maintenance and updating

Reference Materials

Official and Reference Methods

Reference Laboratories

Vocabularies, Guidelines and procedures

PTs Providers

Food composition

Contaminants in food

Food markers

Characteristics of production areas and technologies

Food consumption

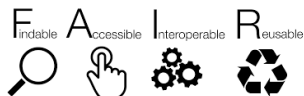
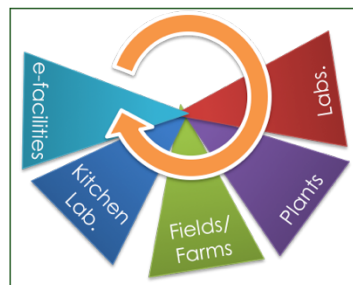
- Sampling, pretreatment and storage
- Food composition and characterization
- Inorganic contaminants
- Organic contaminants
- Chemical and biological markers and profiles
- Microbiological analysis
- Development of sensors and devices
- Environmental Analysis
- Testing (rheological, leaching, etc.)
- Other

- Crop production
- Animal breedings
- Fish farms

- Industrial processing
- Packaging
- Supply chain and storage
- Food preparation



**METROFOOD-RI - in full harmony with the RRI principles - will provide distributed services, acting on the real plan of measurement reliability and procedure harmonization and adopting the FAIR approach on data management**



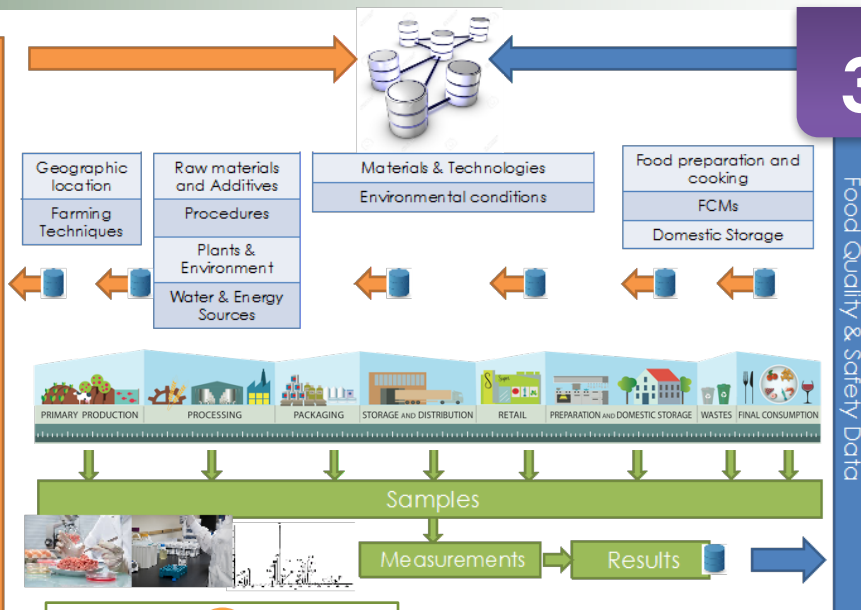
**Metrological & Standardisation Services**

Agro-ecosystem characterisation, Food analysis, Food Packaging testing & characterisation

Services related to the improvement of Food Production & Consumption

e-Services

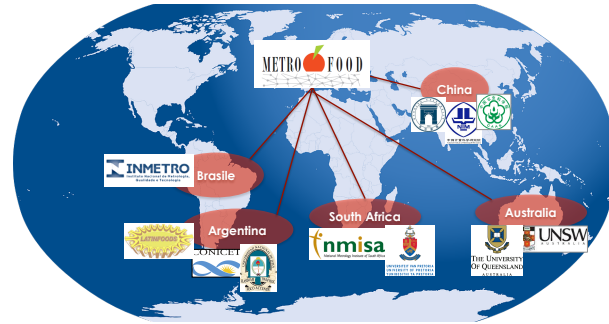
**Integrated Services**





## Who & where

## 4. Who, Where, When



### Users



### Support from International Organisations



### TIMELINE

Roadmap Entry: 2018

Design Phase: 2015 -2017

Preparation Phase: 2018 -2021

Implementation/Construction: 2021 -2024

Operation: 2019-2043

# 5. Outputs & Impacts



Promotion of excellence & interoperability

Enabling the agrifood sector  
to digitalisation and internationalisation

- **Increase of the reliability** of *quality* agrifood products on the markets
- **Reduction of the vulnerability** of the production chain to frauds and tampering
- Building **competitiveness on objective bases**
- Promotion of **food defence**
- Strengthen of **internationalization**
- Development of **new products**
- Implementation of **new technologies**
- Development of innovative **integrated collaborative traceability systems**
- Enforcement of **consumers' trust**
- Allowing **more conscious and reliable choices**
- **Best practices** all along the food chain
- **Food waste reduction**

Comprehensive approach  
to Food Quality & Safety

Improvement of safety, healthiness and  
sustainability of productions

***Towards convergent objectives...***



Alignment of research & innovation with the values, needs  
and expectations of the whole Society

# Thank you for your kind attention!

## Contacts



[www.metrofood.eu](http://www.metrofood.eu)

### Coordination Office

Giovanna Zappa (*Coordinator*) – [giovanna.zappa@metrofood.eu](mailto:giovanna.zappa@metrofood.eu)  
Claudia Zoani (*Deputy Coordinator*) – [claudia.zoani@metrofood.eu](mailto:claudia.zoani@metrofood.eu)  
[info@metrofood.eu](mailto:info@metrofood.eu) - Phone: +39 06 3048 6202  
ENEA – C.R. Casaccia, Via Anguillarese 301, 00123 Roma (Italy)

