

EMBRC
EUROPEAN
MARINE
BIOLOGICAL
RESOURCE
CENTRE

ESFRI Exchange of Experience Workshop on Horizon EU Preparatory Phase and Funding

**Panel 1:
Governance and funding.**

*Marco Borra
Coordinator
EMBRC-ITALY*



- Introduction to RI & ERIC Consortium
- Introduction to EMBRC-ERIC
- Management Structure & stakeholder commitment
- Implementation of a functional management team
- Business Plan
- Funding

Research Infrastructures



“facilities, resources and related services that are used by the scientific community to conduct top-level research in their respective fields and covers major scientific equipment or sets of instruments; knowledge-based resources such as collections, archives or structures for scientific information”

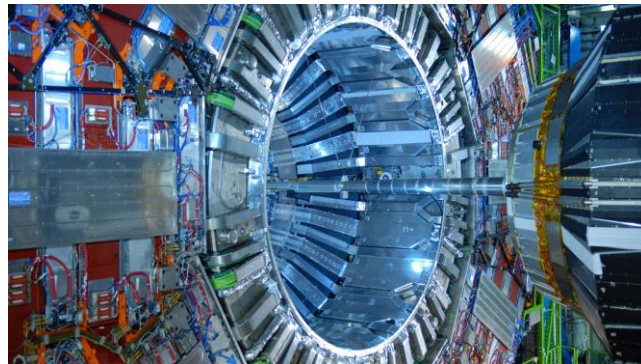
- SUPPORT research & innovation in their domain
- PROVIDE resources, services, data/or data
- ENABLES broad range of research
- SOLVE bottlenecks for their domain



Research Infrastructures - Challenges



- RIs are typically large facilities, e.g. European Synchrotron Radiation Facility (ESRF), CERN, European Molecular Biology Laboratory – *huge financial investments*
- Pillars of international research, crown jewels of European research
- Require legal framework to manage conception, building & operations
- Involves a large number of countries and organisations
- Governed by Intergovernmental Organisations (IOs)



What is an ERIC?



- “European Research Infrastructure Consortium” – *Legal entity for RIs*
- “The principal task of an ERIC shall be to establish and operate a research infrastructure” – *tool dedicated to jointly operate EU RIs*
- Facilitated framework for creating and operating RIs – *easier and faster to set up than an IO*
- Template for statutes proposed by ERIC regulation but more can be added if needed
- Important Features:
 1. Governance: Host Country, GA of members, executive legal representative
 2. Budget: long-term financial contributions, host premium
 3. Annual reporting to the European Commission

EMBRC-ERIC – Europe's RI for marine biological resources



Composition

9 countries, 45 sites for research & experimentation

Mission

Support & facilitate marine biological research & innovation, solve bottle necks, technological development

Access to Ecosystems and biodiversity

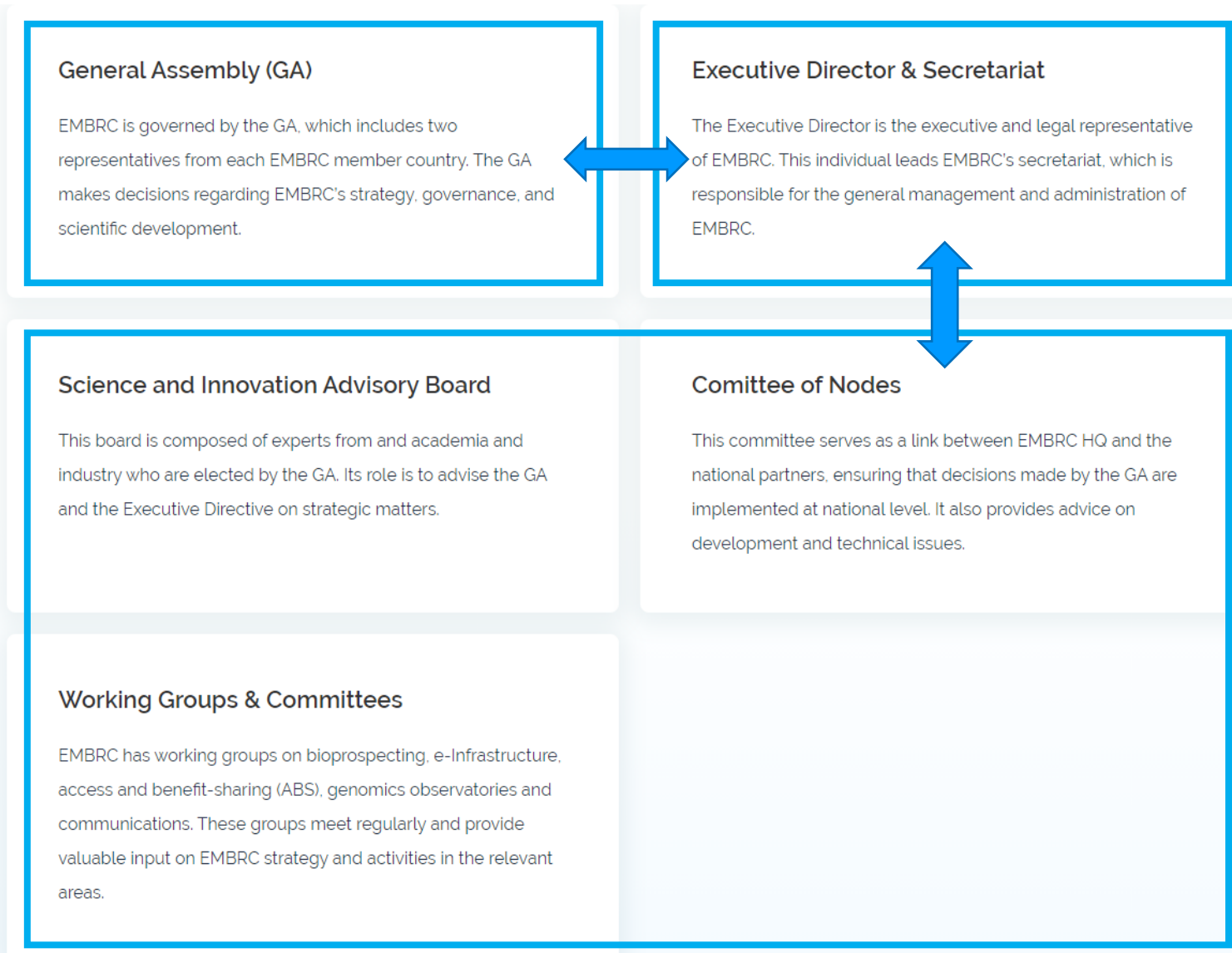
Wild-types, culture collections, models organisms, EMO BON (genomics observatory - data)

Access to research facilities & platforms

Enabling research close to source of marine resource – experimental facilities (e.g. aquaria), technical and analytical platforms (e.g. microscopy, mass-spec)



EMBRC-ERIC – Governance & Operations



- **General assembly** – Decision making body
- **Executive Director & Secretariat** – Daily operations
- **Advisory Board, Committee of Nodes, Working Groups & Committees** – External advice, Operational implementation, technical advice and coordination
- **Countries operate as Nodes** – each node can constitute one of more institutions – “Operators”, with its own national governance
- **Node = National Research Infrastructure**
- **Rules of Operation** – outline how the RI operates
- **Service level agreements** – define role and responsibilities of the Secretariat, the Nodes, and the Operators

Management Structure & stakeholder commitment



- Importance of clear line of INTERNAL communication



- Importance of assigning people in HQ AND nodes to support the ERIC and the national infrastructure

➔ **CoN... and more....**



- Clear engagement from GA/governing board of RI

Implementation of a functional management team



- Team brings the relevant expertise to make the RI work, from admin to data management, communication, and access



- Establishing a team as early as possible



- Salaries of ERIC team



- Strategic choices: core VS project budget



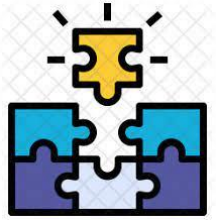
- BP secures ERIC functioning



- Lends credibility to the RI and reassures funders/investors



- Aligned with the RI's aspirations



- Complementarities between national and EU instruments and/or innovative financing solutions



- Horizon funding allows for strategic objectives to be addressed involving multiple external partners



- National funding is hugely important to ensure investment in national assets and assuring human resources



- Over-reliance on external funding is risky

Success = a multifactorial puzzle



Thank you!
Any questions?

Contact us



4 Place Jussieu, Tour 46/00
1^{er} étage, bureau 101
75252 Paris Cedex 05 (FR)



info@embrc.eu



+33 (0)1 44 27 63 37



www.embrc.eu