

# A medley of studies featuring the European Social Survey

Mark Visser

# THE DEATH OF SURVEY RESEARCH?



# THE DEATH OF SURVEY RESEARCH?

- Dwindling response rates



# THE DEATH OF SURVEY RESEARCH?

- Dwindling response rates
- Sharply increasing costs



# THE DEATH OF SURVEY RESEARCH?

- Dwindling response rates
- Sharply increasing costs
- Rise of big data



## ALIVE AND KICKING

- Big data as an opportunity (complementing surveys), rather than a threat (replacing surveys)

## ALIVE AND KICKING

- Big data as an opportunity (complementing surveys), rather than a threat (replacing surveys)
- It is now more important than ever to understand society

## ALIVE AND KICKING

- Big data as an opportunity (complementing surveys), rather than a threat (replacing surveys)
- It is now more important than ever to understand society
- Surveys are still the methodological vehicle of choice in quantitative social science to answer substantive research questions and test hypotheses
- Thanks to initiatives such as the European Social Survey (ESS)





## MONITORING SOCIAL CHANGE IN EUROPE SINCE 2002

- The ESS is a biannual cross-national survey that is administered face-to-face
- It was awarded European Research Infrastructure Consortium (ERIC) status in 2013

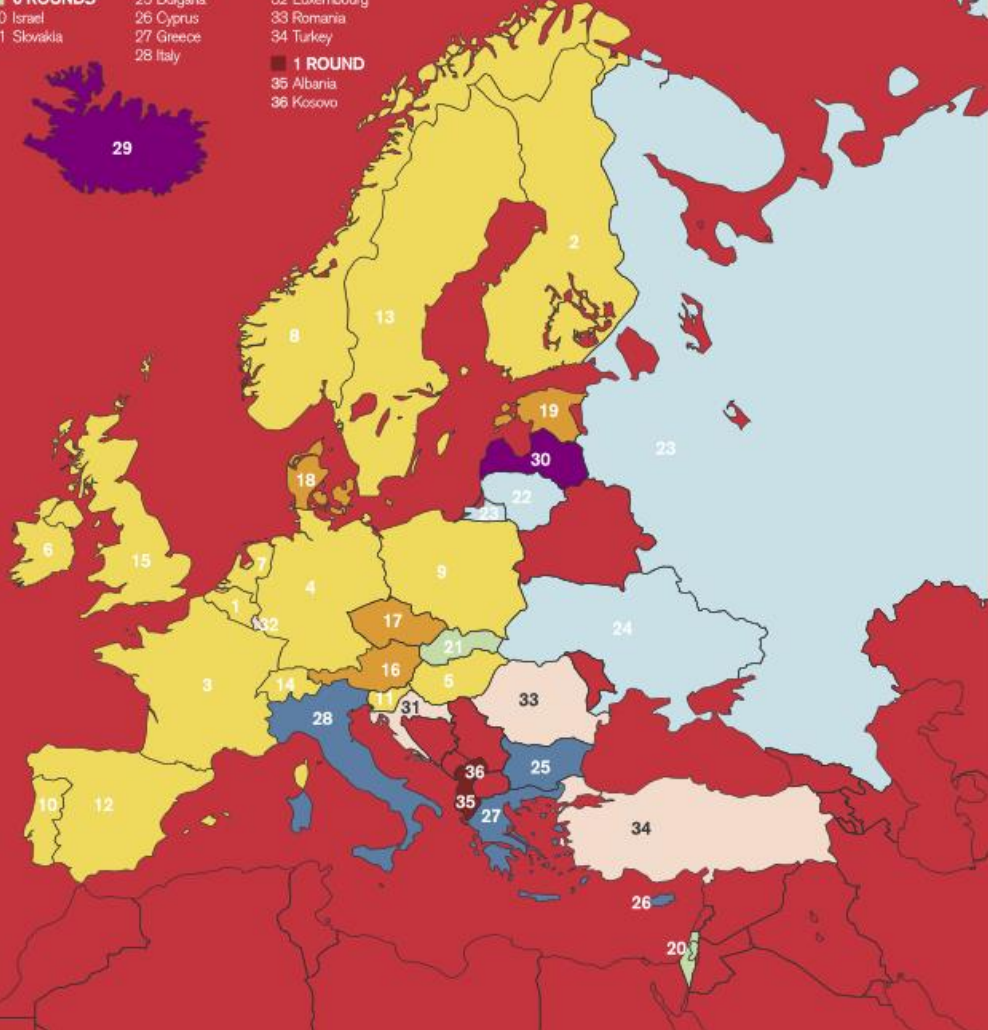
## MONITORING SOCIAL CHANGE IN EUROPE SINCE 2002

- The ESS is a biannual cross-national survey that is administered face-to-face
- It was awarded European Research Infrastructure Consortium (ERIC) status in 2013
- There are currently nine rounds (2002-2018) of ESS data available free of charge
- Academically driven and methodologically rigorous: extensive testing of questionnaires, strict translation protocols, high-quality sample design, trained interviewers and a standardized interviewing approach, elaborate survey documentation, etc

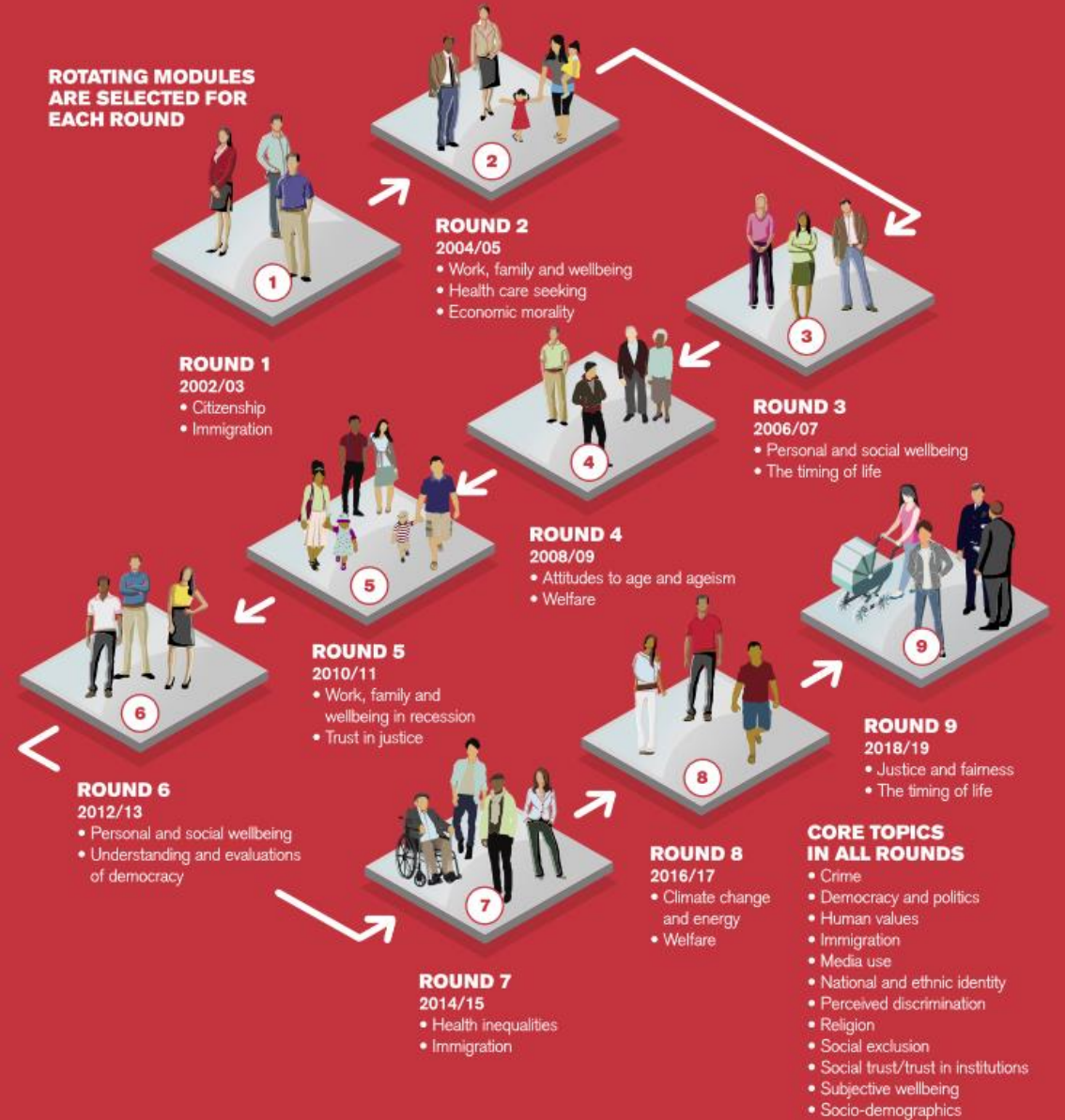
# ESS PARTICIPATING COUNTRIES

## Rounds 1-8

- |                 |                   |                 |                 |
|-----------------|-------------------|-----------------|-----------------|
| <b>8 ROUNDS</b> | <b>7 ROUNDS</b>   | <b>5 ROUNDS</b> | <b>3 ROUNDS</b> |
| 1 Belgium       | 16 Austria        | 22 Lithuania    | 29 Iceland      |
| 2 Finland       | 17 Czech Republic | 23 Russia       | 30 Latvia       |
| 3 France        | 18 Denmark        | 24 Ukraine      |                 |
| 4 Germany       | 19 Estonia        | <b>4 ROUNDS</b> | <b>2 ROUNDS</b> |
| 5 Hungary       | 20 Israel         | 25 Bulgaria     | 31 Croatia      |
| 6 Ireland       | 21 Slovakia       | 26 Cyprus       | 32 Luxembourg   |
| 7 Netherlands   |                   | 27 Greece       | 33 Romania      |
| 8 Norway        |                   | 28 Italy        | 34 Turkey       |
| 9 Poland        |                   |                 | <b>1 ROUND</b>  |
| 10 Portugal     |                   |                 | 35 Albania      |
| 11 Slovenia     |                   |                 | 36 Kosovo       |
| 12 Spain        |                   |                 |                 |
| 13 Sweden       |                   |                 |                 |
| 14 Switzerland  |                   |                 |                 |
| 15 UK           |                   |                 |                 |



## ROTATING MODULES ARE SELECTED FOR EACH ROUND



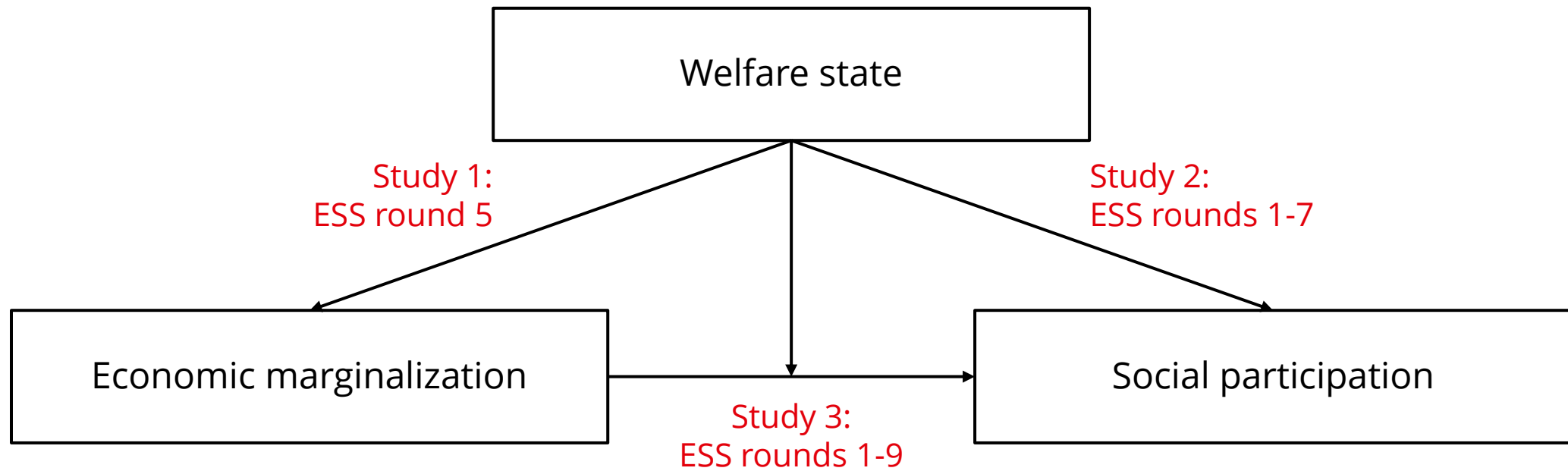
# WHERE IS THE MUSIC?



# A SMALL SELECTION OF MY WORK



## A MEDLEY OF THREE OTHER STUDIES



## SOME EMPIRICAL FINDINGS

- 1) Welfare states provide a social safety net that alleviates and/or prevents economic marginalization

## SOME EMPIRICAL FINDINGS

- 1) Welfare states provide a social safety net that alleviates and/or prevents economic marginalization
- 2) A crowding in effect of social spending on social participation, as opposed to a crowding out effect



## SOME EMPIRICAL FINDINGS

- 1) Welfare states provide a social safety net that alleviates and/or prevents economic marginalization
- 2) A crowding in effect of social spending on social participation, as opposed to a crowding out effect
- 3) Economically marginalized people are less socially active, especially in liberal and conservative welfare state regimes compared to the social democratic welfare state regime, which supports social exclusion theory and is in line with the notion of having limited 'bandwidth'

## CONCLUDING REMARKS

- Survey research in general and the ESS in particular have a bright future
- The increasing availability of big data will only strengthen that future



## CONCLUDING REMARKS

- Survey research in general and the ESS in particular have a bright future
- The increasing availability of big data will only strengthen that future
- ESS ERIC: Monitoring social change for



MERCI BEAUCOUP

- Contact : [mark.visser@ru.nl](mailto:mark.visser@ru.nl)

